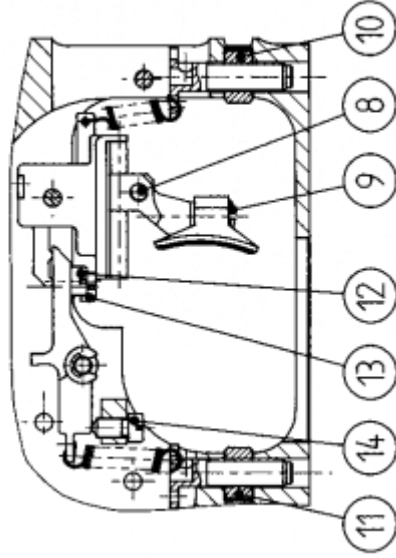
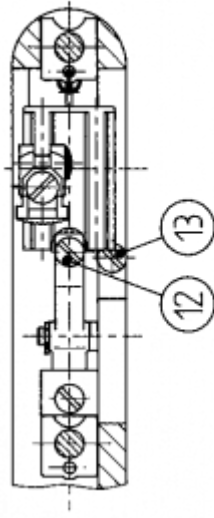


FWB 700 Trigger Adjustemnts

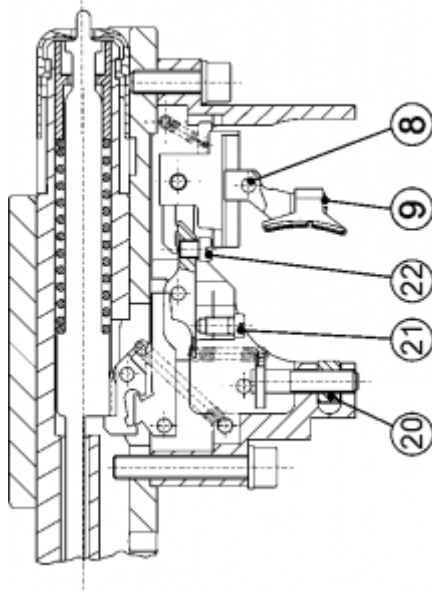


- 10) First Stage Weight. Left increase. Right reduce.
- 11) Second Stage Weight. Left reduce. Right increase.
- 12) Weight Range Selection.
Full in gives 60-150g. Out 1 turn gives 30-90g.
- 13) First Stage Length. Left reduce. Right increase.
- 14) Sear Engagement. Left increase. Right reduce.

Sear Engagement Adjustment Procedure

1. If no sear engagement is present turn (14) to the left.
2. Cock trigger.
3. Turn (14) to the right until trigger releases.
3. Turn (14) approximately 10' to the left.
4. Check release characteristic by dry firing.

FWB 2700 Trigger Adjustments



- 20) Trigger Weight. Left reduce. Right increase.
Range 50-180g.
- 21) First Stage Length. Left increase. Right reduce.
- 22) Sear Engagement. Left reduce. Right increase.

Sear Engagement Adjustment Procedure

1. If no sear engagement is present turn (22) to the right.
2. Cock rifle.
3. turn (22) to the left until trigger releases.
4. Turn (22) approximately 1/8 of a turn to the right.
5. Check release characteristic by dry firing.