

Guida Tecnica

Pistola ad aria compressa

Pistola libera

Pistola sportiva

Materiali e attrezzature



Scritto da Jan-Erik Aepli – Allenatore
traduzione di Sabine Marta

Unione Italiana Tiro a Segno

Index

1.	Materiali e attrezzature	3
1.1	Scelta della pistola	3
1.2	Impugnatura	3
1.2.1	Key points in the processing	3
1.3	Handle work - Practical Steps	4
1.3.1	HANDLES - Line of sight	4
1.3.2	HANDLES - The hand that holds the weapon without handle	5
1.3.3	HANDLES - Support base of hand	6
1.3.4	HANDLES - Width between thumb and index	7
1.3.5	HANDLES - Support base of hand	8
1.3.6	HANDLES - Finger position	9
1.3.7	HANDLES - Causes of errors	10
1.4	Shooting Clothing	11

1. Materiali e attrezzature

1.1 Scelta della pistola

- Per la scelta della pistola bisogna tenere conto dei seguenti punti:
 - distribuzione dei pesi
 - possibilità di modificare in modo semplice il meccanismo dello scatto
 - possibilità di regolare i congegni di mira
 - possibilità di regolazioni e adattamento dell'impugnatura.
- Con la pistola ad aria il pallino deve raggiungere la seguente velocità:
 - Aria compressa ca. 150 m/s - 155 m/s
 - Pistola a CO2 ca. 160 m/s - 170 m/s
- La scelta della canna e delle munizioni è necessaria qualora si voglia raggiungere un'alta prestazione.

1.2 Impugnatura

- La massima dice: l'arma spara e il calcio (l'impugnatura) centra.
- Nella lavorazione dell'impugnatura contano in primo luogo le norme del regolamento sportivo di tiro della propria federazione.

1.1.1 Key points in the processing:

- Grip will always be adapted to the hand **from the back to the front**.
- The **line of sight** (eye-tacca- viewfinder - target) runs ideally over the hand and over the line median of the arm.
- **support base of the hand** to the wrist!
- base of the thumb as a point of lateral block and at the same time the handle to be put to **the center of** the hand **snuff** (between thumb and forefinger)
- **width of** the space of 'grip between thumb and index determined by the extent of snuffbox
- **thumb and forefinger** adhere **parallel** to the handle
- **thumb and index** have the **same** height
- fit the palm of the hand as follows:
 - hands broad, tough - thin handle
 - lean and thin hands - normal or wide grip
- The **central phalanges** (falangine) are bent at a right angle (**90 degrees**) to the axis of the barrel and at the **center** of the trigger
- **Middle, ring** hold the weapon
- The **thumb** serves to stabilize
- L '**index** may slightly adhere to' handle with the top joint
- The **first and second phalanx** (Falanghina and falangetta) do not touch either the gun or the handle!
- The **first joint of** the coupling point (end of the first race) must be at right angles (90 degrees) respect to the axis of the barrel

1.3 Lavorazione dell'impugnatura – Passaggi pratici

1.3.1 *IMPUGNATURE – Linea di mira*



Put the gun in the middle of the hand



Line of sight from the front



Line of sight from above



Line of sight from behind

Fundamental points:

Put the gun in the middle between thumb and forefinger

The line of sight notch - Viewfinder runs over the center of the back of the hand, along forearm up eye

Finger and thumb are parallel to 'handle

Position of head straight towards the 'grip

1.3.2 IMPUGNATURE – *La mano che impugna l'arma senza impugnatura*

HANDLES - The hand that holds the weapon without handle



front view



Side View



Direct view from below



Side view from behind



Side view

Fundamental points:

- Thumb and index finger parallel
- Thumb and index have about the same height
- The falangine (middle phalanges) of the middle, ring and little fingers are bent at an angle rectum (90 degrees) with respect to the hand
- Bend naturally the index until the first phalanx (fingertip) is at right angle (90 degrees) with respect to the hand

1.3.3 IMPUGNATURE – Base d'appoggio della mano



Support base of the hand stretched with plastic wood



The hand support base copied and secured with two screws



Cradle of optimal / air pistol hand



The hand support base too short / sporting gun

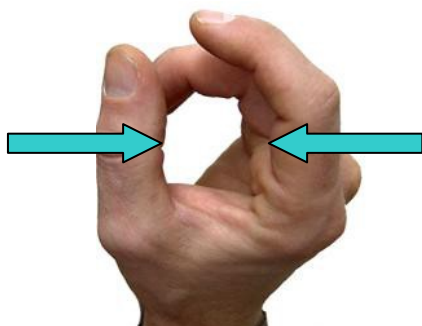


The hand support base Optimal / sporting gun

Fundamental points:

- Typically the original grips of companies are too short
- The support base of the hand can be stretched to the wrist
- The extension gives the hand more stability and greater pressure from below

1.3.4 IMPUGNATURE – Ampiezza tra pollice e indice



Return the width between your thumb and forefinger (parallel) on the handle



Space of 'handle between thumb and forefinger too wide



Of 'handle space between thumb and forefinger too strict



Processing on the space for the snuffbox

Fundamental points:

- The width of the space of 'grip between thumb and index is determined by hand size
- The space of 'grip between thumb and index finger and thumb will be such that adhere parallel to the handle itself

1.3.5 IMPUGNATURE – Base d'appoggio della mano



The base of the hand has much room in the 'grip



View from above towards the base of hand



Optimum tight lateral support base for the hand

Fundamental points:

- In the lower part of the 'grip there must be sufficient space for the base of the hand
- The rear side support for the hand should be kept narrow - line of sight straight

1.3.6 IMPUGNATURE – Posizione delle dita



The surface of the middle finger support inclined / light contours for the fingers



Optimal support of the middle finger / phalanges central (falangine) are bent at an angle rectum (90 degrees) to the axis of the barrel and at the center of the trigger



The index finger is the first phalanx free



The bent index finger naturally



Thumb and index are about the same height and parallel adhere to 'handle

Fundamental points:

- Thumb and index are about the same height
- Thumb and forefinger adhere parallel to 'handle
- The first two phalanges of the index does not touch the handle
- The third phalanx can lightly touch the handle
- The index is naturally folded so that the first joint is at a right angle (90 degrees) respect to the axis of the barrel
- The upper part of the middle finger on the handle must be used in all its width
- The central phalanges (falangine) of the middle, ring and little fingers are bent at right angles (90 ° degrees) to the axis of the rod and the center of the trigger

1.3.7 IMPUGNATURE – Cause di errori

Causes of errors



The too big handle - index and back of the handle have too much space. Too raised thumb



The fingers are not positioned centrally with respect to the trigger. The inner base of the hand too little space in the handle



Line of sight is not centered The fingers have too space and wrap around too the handle



Based rear side support too thick Space for snuff sharp left, too wide to the right



Based rear side support too thick

Fundamental points:

- Too big handle - The fingers and the back Hand have too much space
 - The central phalanx are not in axis with respect to the trigger
 - The inner base of the hand has too little in the handle area
 - Line of sight is not aligned
 - The fingers wrap around the handle too
 - Based rear side support too thick
 - Space for snuff too tight
- Holding a too high intake
 - The handle is not held so uniform
 - The handle is not held so uniform
 - Articulation of the wrist is contracted
 - At the time of the release can take place a tear
 - Line of sight is not centered
 - The handle is not held so uniform

1.4 Shooting Clothing

If possible, use always **the same** clothing shooting

Shooting clothing **is not tight** and that allows good breathing

Sturdy shoes with a flat, **thick** sole

The interior of the shoe possibly not too soft

Headphones are "required" even in the compressed air

A hat **with a visor** in equipment draft should never be overlooked